

TRAFFIC 12

The National
Transport System Plan



MINISTRY OF TRANSPORT
AND COMMUNICATIONS

Preparation of the National Transport System Plan

Sabina Lindström
Ministry of Transport and Communications
17 June 2019

New strategic planning platform for long-term development



The national
transport system plan



**Municipal and
urban area**
transport system plans



The regional
transport system plan

A continuous and rolling process

- In the future, the plan will be updated each government term. Additionally, at the beginning of each government term, checks related to the plan for public finances.
- The process will constantly develop, for example, as methods for impact assessments are developed.
- Methods will be developed for the monitoring of the plan's implementation and for continuous interactive work on the transport system at all levels.

Parliamentary steering group

Chair

Minister of Transport and Communications
Sanna Marin

A member from every parliamentary group, permanent advisers

Tasks

- to outline and prioritise the plan's objectives
- to steer the preparation of the plan and its action plan on the basis of the objectives which have been decided on and the impact assessments
- to outline the content of the plan's draft before it is discussed for the parliament as a report



Cooperation group



Chair Director General Sabina Lindström

Members from ministries, government agencies, regional councils, the Association of Finnish Local and Regional Authorities, large urban regions, other municipalities

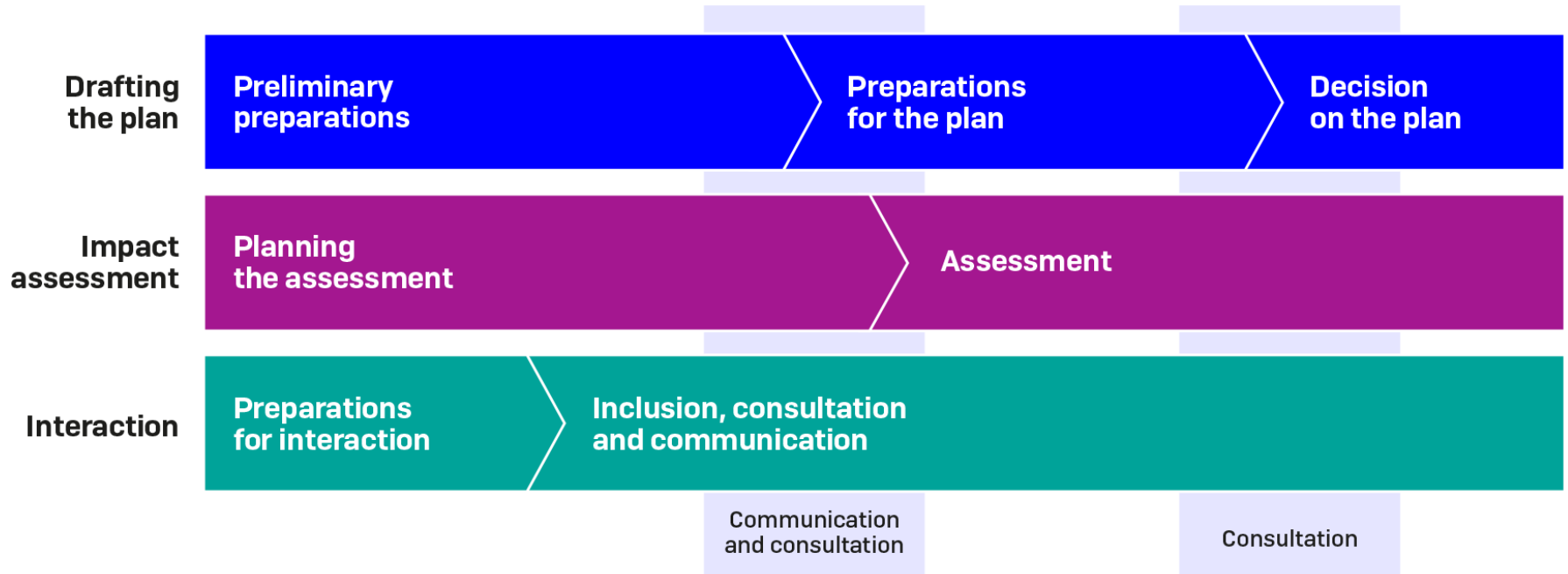
Permanent advisers (impact assessment)

Secretariat same in both working groups (Ministry of Transport and Communications, Finnish Transport and Communications Agency, Finnish Transport Infrastructure Agency)

Tasks

- to ensure interaction and cooperation with stakeholders.
- to ensure interaction in the planning of the national and regional transport systems, especially by bringing regional data on customer needs to national planning
- to take part in preparing the content for the plan
- to coordinate the preparation of the plan with other national plans

Areas and phases of planning



Phasing of the drafting of the plan

1. Preparatory drafting

- The current state of the transport system and changes in the operating environment
- Collection of background materials
- Preparation of the options for the plan's objectives

2. Preparation of the plan

- Decisions on goals, the objectives of the plan and resource limits (economic framework)
- Drafts of the plan and their impact assessment
- Preparation of the financing programme
- Compiling a draft of the plan for the statements round.

3. Deciding on the plan

- Parliamentary steering group
- Report to the parliament
- Government Decision (plan ready)

Plan on interaction

Preparation of interaction

- Talks with ELY Centres, regional councils and municipalities
- Situation overviews and talks during preparatory drafting with various stakeholders

Interaction during planning

- **Launch event for preparation 17 June 2019**
- Theme-specific events
- Talks with e.g. municipalities and urban regions
- Talks with business sector actors
- National consultation events
- A draft of the plan and the assessment report will be submitted for statements
- Consideration by Parliament

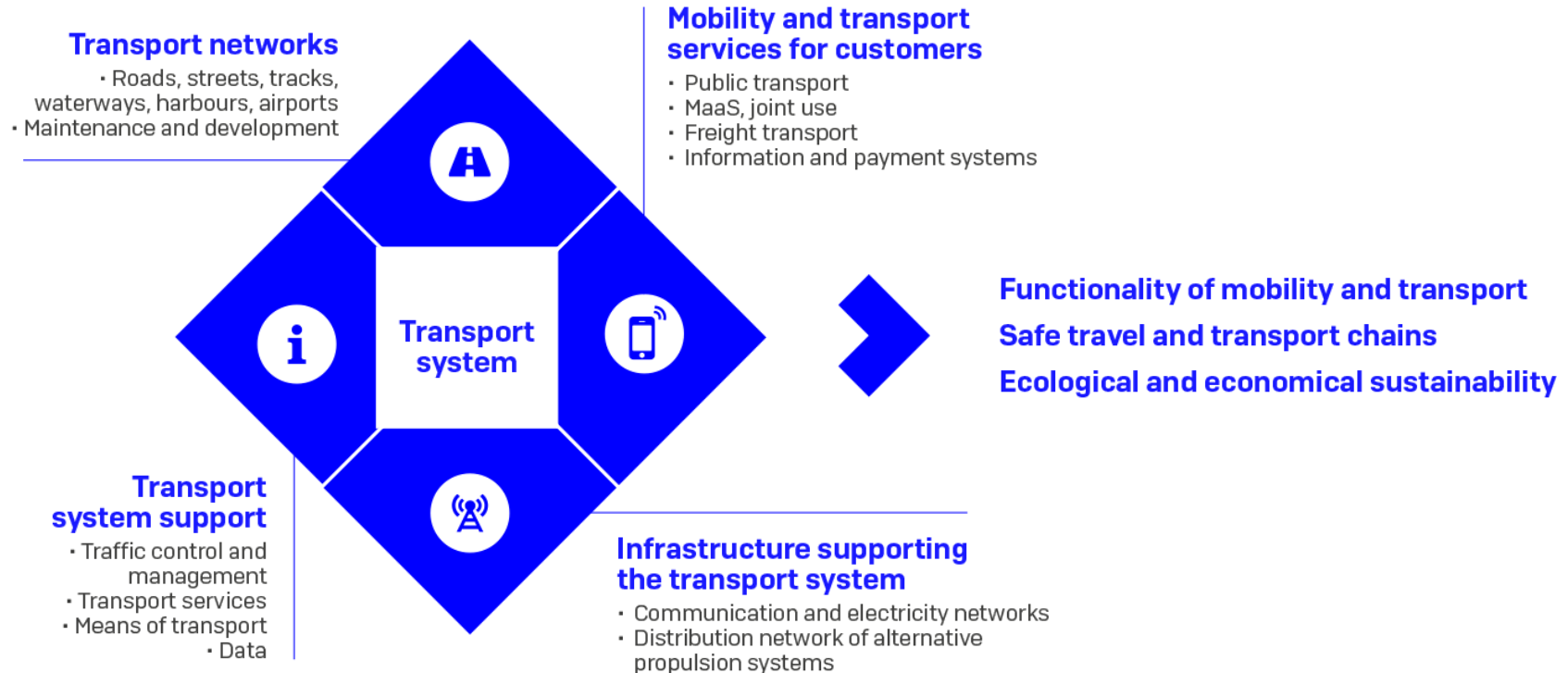
Consultation of business sector (Finnish Transport Infrastructure Agency), regional work on the transport system, existing cooperation groups, networks and advisory boards

Coordination with other preparation

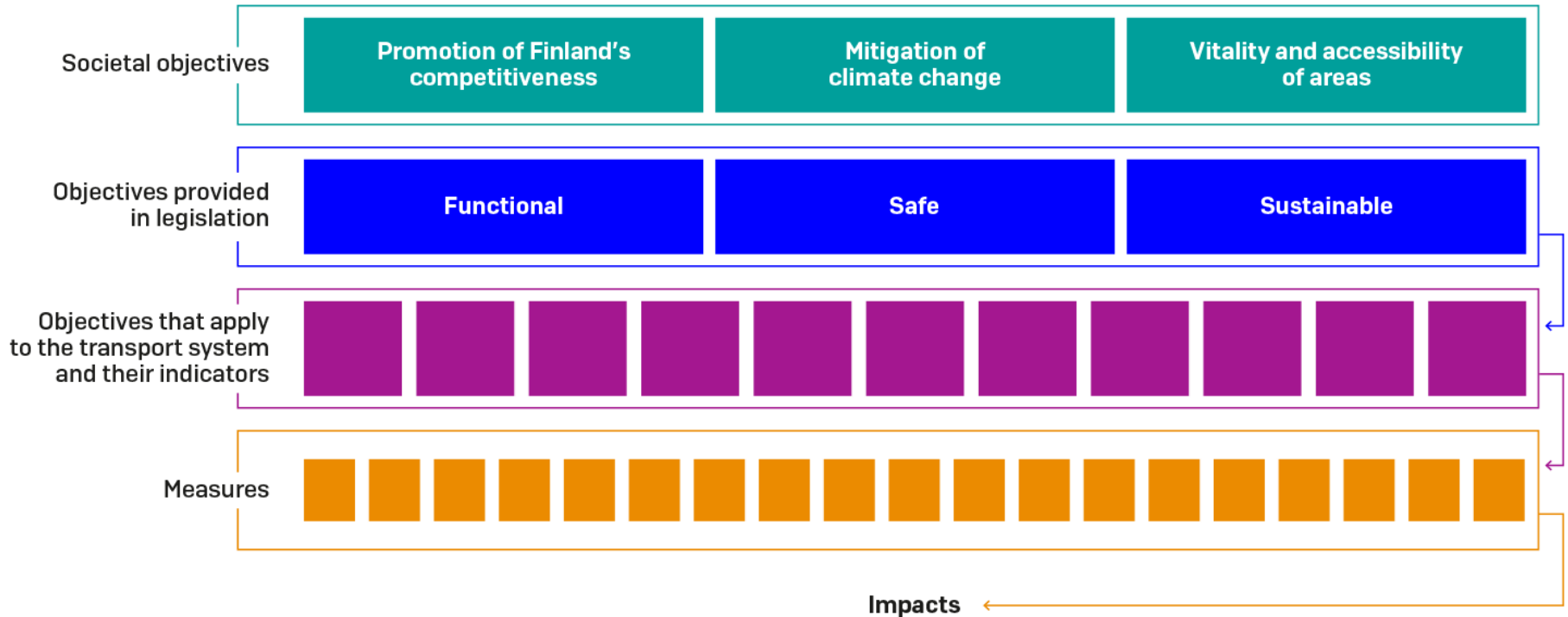
The Ministry of Transport and Communication ensures the reconciliation of the plan with other national plans, especially:

- National climate policy
- The decision on regional development
- Urban policy and preparation of agreements
- Plan for public finances

Overview of the transport system



Construction of the plan



What could the plan comprise?

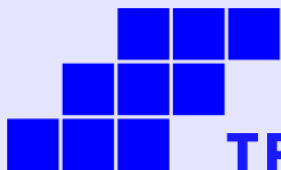
- The overall picture of the route network's development and national criteria, which could be used to steer the planning, construction and financing of projects.
- Steering and prioritising of measures for basic transport infrastructure maintenance. Assessment of needed changes to the Main Route Decree
- Development of the focus areas for public passenger transport, walking, biking and mobility services.
- Measures that will promote success in achieving objectives for cuts in traffic emissions.
- Promoting the utilisation of data.
- Also municipal and urban region plans that will implement the plan's objectives.

State financing programme

- The financing programme, contained in the plan in addition to budgetary financing, can comprise funding from outside the budget.
- The parliamentary steering group will decide on the content of the fiscal plan as preparation progresses.

Entities included in the plan

1. The current state of the transport system and changes in the operating environment
2. The transport system's societal goals and the objectives of the plan
3. Action plan (state and municipalities)
4. State financing programme
5. A summary of the impact assessment
6. Monitoring of the plan and organisation of continuous work on the transport system
7. Suggestions and advice for the next round of planning



TRAFFIC 12

The National
Transport System Plan

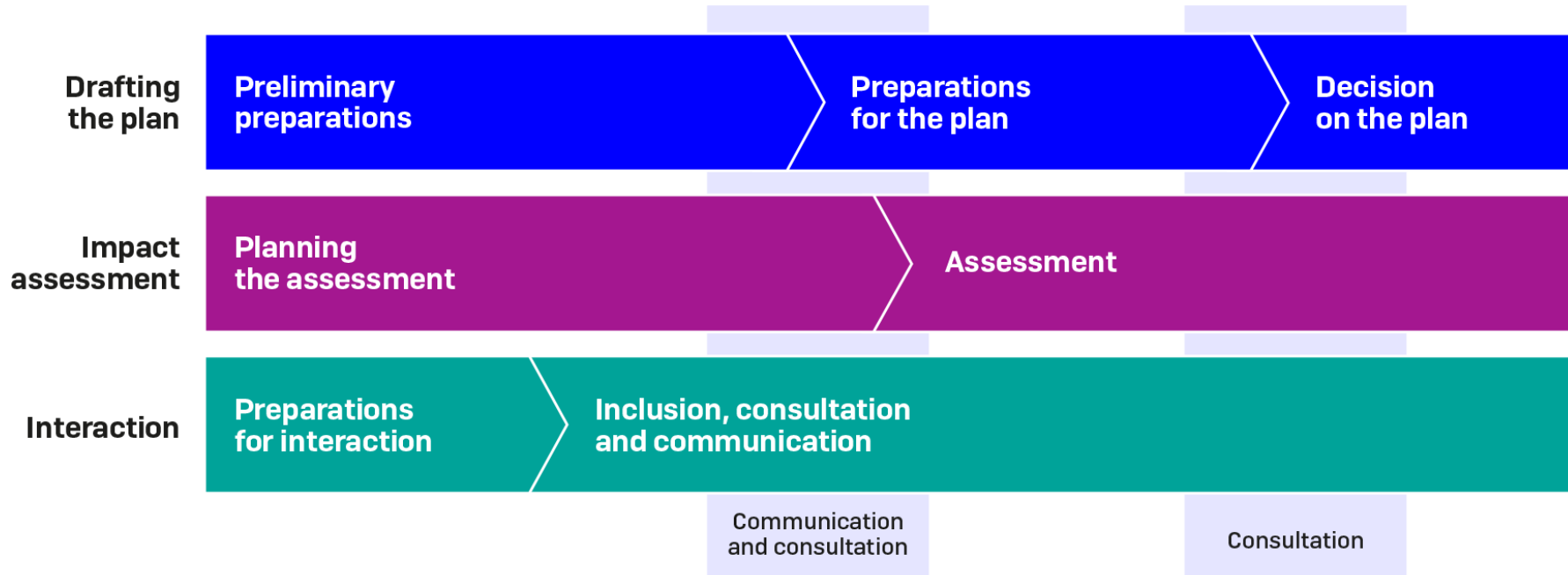


MINISTRY OF TRANSPORT
AND COMMUNICATIONS

Programme for the National Transport System's impact assessment

Tuire Valkonen and Niko-Matti Ronikonmäki
Ministry of Transport and Communications
17 June 2019

Areas and phases of planning



Why are assessments performed?

1. Improve planning and decision making
2. Ensure that decisions are more transparent
3. Encourage cooperation and learning together

Legal basis for the impact assessment

LEGISLATION



Act on the Transport
System and Highways
(503/2005)

Act on the Assessment
of the Impacts of the
Authorities' Plans,
Programmes and Policies
on the Environment
(200/2005)

- **Functionality:** Functionality of mobility and transport
 - **Safety:** Safe travel and transport chains
 - **Sustainability:** Ecological, social and economic sustainability
-
- Health, living conditions and level of comfort of people
 - Urban structure, built environment, landscapes, townscape and cultural heritage
 - Soil, waters, air, climate, biodiversity
 - Utilisation of natural resources

Five areas of impact assessment

LEGISLATION



**Act on the Transport
System and Highways
(503/2005)**

**Act on the Assessment
of the Impacts of the
Authorities' Plans,
Programmes and Policies
on the Environment
(200/2005)**

ASSESSED IMPACTS



Accessibility and quality of service for travel and transport



Economic sustainability



Ecological sustainability



Social sustainability



Safety of the transport system

Overall picture of the transport system plan's impact assessment

ASSESSED IMPACTS



Accessibility and quality of service for travel and transport

Finland's accessibility internationally

Accessibility between areas

Internal accessibility of urban regions and areas

Quality of transport services and user benefits

Quality of services on journeys and user benefits



Economic sustainability

Social and economic efficiency

Impacts on public finances

Requirements for economic growth



Ecological sustainability

Climate impacts of transport system

Climate change adaptation

Exposure to traffic-related emissions, noise and vibration

Sustainability of the urban structure

Biodiversity

Use of natural resources, material-efficiency

Risks to waters and soil



Social sustainability

Potential for mobility

Regional structure and prerequisites for the development of regions

Living conditions, the built environment and landscapes



Safety of the transport system

Safety of road traffic

Safety of mobility environments

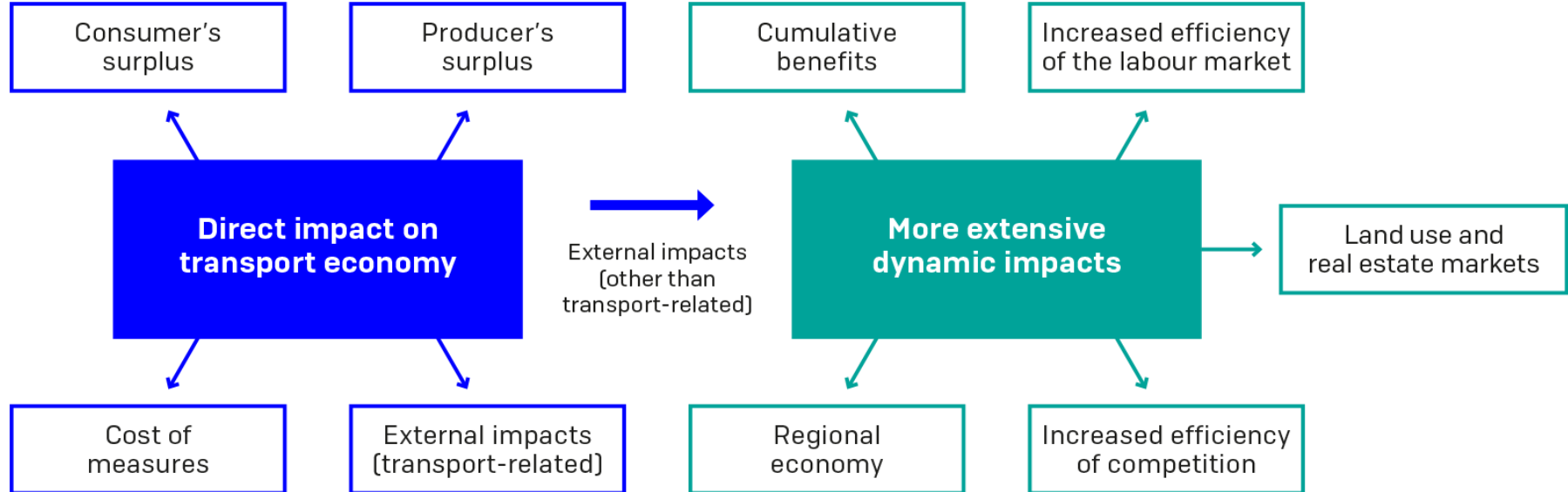
Safety of railroad, maritime, and air traffic

Data security of transport

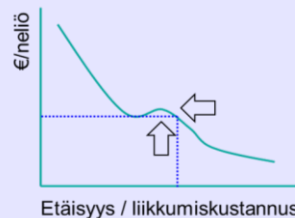
Case: Economic impact assessment



Economic impacts of the transport system: theoretical framework



Impact assessments are a fundamental part of planning



Alue	Kilnteistömarkkinat
Alue 1	+
Alue 2	++
Alue 3	-
Valtakunnantaso	Kokonaisaavutettavuuden kasvu myötä yhdyskuntarakenteen tiivistymiselle syntyy edellytykset.

1

Identification of the assessed impact and the determination of the assessment method. The objectives of the plan as a premise.

2

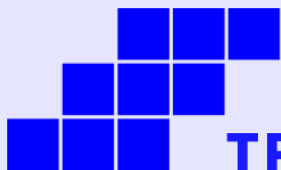
The premise will be the assessment of changes in the future operating environment

3

Assessments are carried out as both qualitative and quantitative assessments

4

The results of assessments will be analysed and presented with key conclusions for the preparation and decision making related to the plan



TRAFFIC 12

The National
Transport System Plan

Thank you!

